

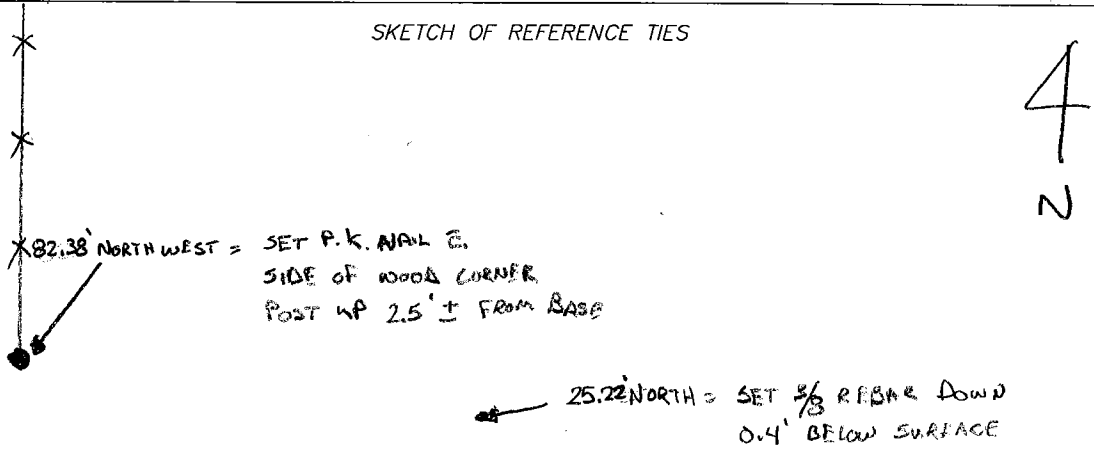
CERTIFICATE OF LOCATION OF GOVERNMENT CORNER

NORTH QUARTER Corner of Section 4, Township 107 N, Range 43 W, 5th P.M.
 STATE OF MINNESOTA, County of MURRAY

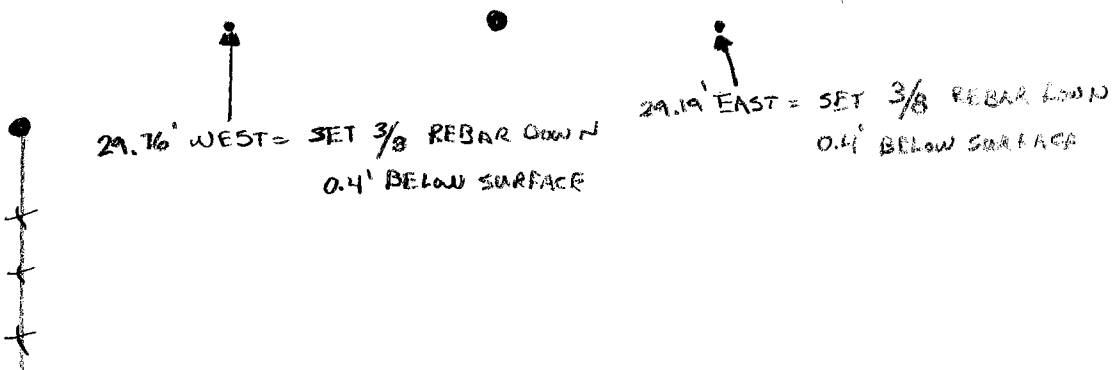
At the corner location shown on the sketch:

- On _____ found a _____
DATE
- left monument as found, lowered monument, removed monument (explain)
- On 7/28/07 placed a 3/8 CAPPED REBAR # 40853 DOWN 0.2' BELOW SURFACE
DATE

SKETCH OF REFERENCE TIES



181TH ST. GRAVEL



Statement of evidence relative to this corner location is on back of page.

I hereby certify that this document and the data contained herein was prepared by me or under my direct supervision.

[Signature]

SIGNATURE

Registration No. 40853

- Land Surveyor, Professional Engineer
 County Surveyor, County Engineer

OFFICE OF THE COUNTY RECORDER
 County of _____

I hereby certify that this document was filed in the Co. Recorders office at _____ M. on the _____ day of _____ A.D., 20____

County Recorder _____
 By _____, Deputy
 DOCUMENT NO. _____

Statement of Evidence (N. ¼ cor. Sec. 4, Twp. 107, Rge. 43)

On July 26, 2007, Westwood Professional Services excavated with a backhoe and found no evidence. A 3/8 inch capped rebar was set (PLS 40853) 0.2 feet below grade midway and online from the northeast corner and the northwest corner of the section. The total measured distance from the northeast corner to the northwest corner was 5277.32 feet.